

The Association of University Legal Aid Institutions Trust



THE AULAI TRUST

ABOUT THE AULAI TRUST

The South African University Law Clinics Association (SAULCA) – previously known as the Association of University Legal Aid Institutions (AULAI) was established in 1986 and is the umbrella body for all University Law Clinics (ULCs) in South Africa. SAULCA was instrumental in the founding of the AULAI Trust (the Trust) and it was established in 1998 with funds received from the Ford Foundation as an endowment fund. Since 1998 the Trust received funding from various donors through which the Trust established a number of successful projects.

The projects, as described herein later, are still operational.

Through its projects the Trust gathered a wealth of information on access to justice, the activities of law clinics (ULC's), clusters, Community Based Paralegal Advice Offices (CBPAOs) and paralegals. This information is, *inter alia*, on the following subjects:

- Clinical Legal Education (CLE)
- Development: ULC's
- Clusters
- Candidate Attorneys
- Involvement with paralegal structures, CBPAOs and paralegals
- Free legal services to thousands of people

THE AIMS AND OBJECTIVES OF THE TRUST

The aim of the Trust is to create a fund for all legal aid and clinical legal education institutions at universities in the Republic of South Africa, the operations of which are in the interest of the citizens of the country.

In furthering the aim of the Trust, the Trust has the following objectives:

1. The promotion of legal aid in South Africa, in particular through the co-ordination and promotion of the activities and interests of legal aid institutions attached to the universities in South Africa;
2. The encouragement and promotion of practical legal education of law students by members of the association;
3. To provide program support and capacity building to law clinics and law clinicians;
4. The fostering, maintaining and extending of the public confidence in the law and the administration of justice; and
5. The development of collaborative partnerships with other organizations that share the vision of the Trust, such as the paralegal movement in South Africa.

The activities of the Trust shall be confined to the Republic of South Africa and the funds of the Trust will be applied within the Republic of South Africa

THE TRUSTEES

The founder Trustee: Yousuf Vawda

Karthigasen Govender;

David Mcquoid Mason;

Nicolaas Steytler;

Jonathan Campbell;

Jobst Bodenstein;

Thulisile Mhlungu;

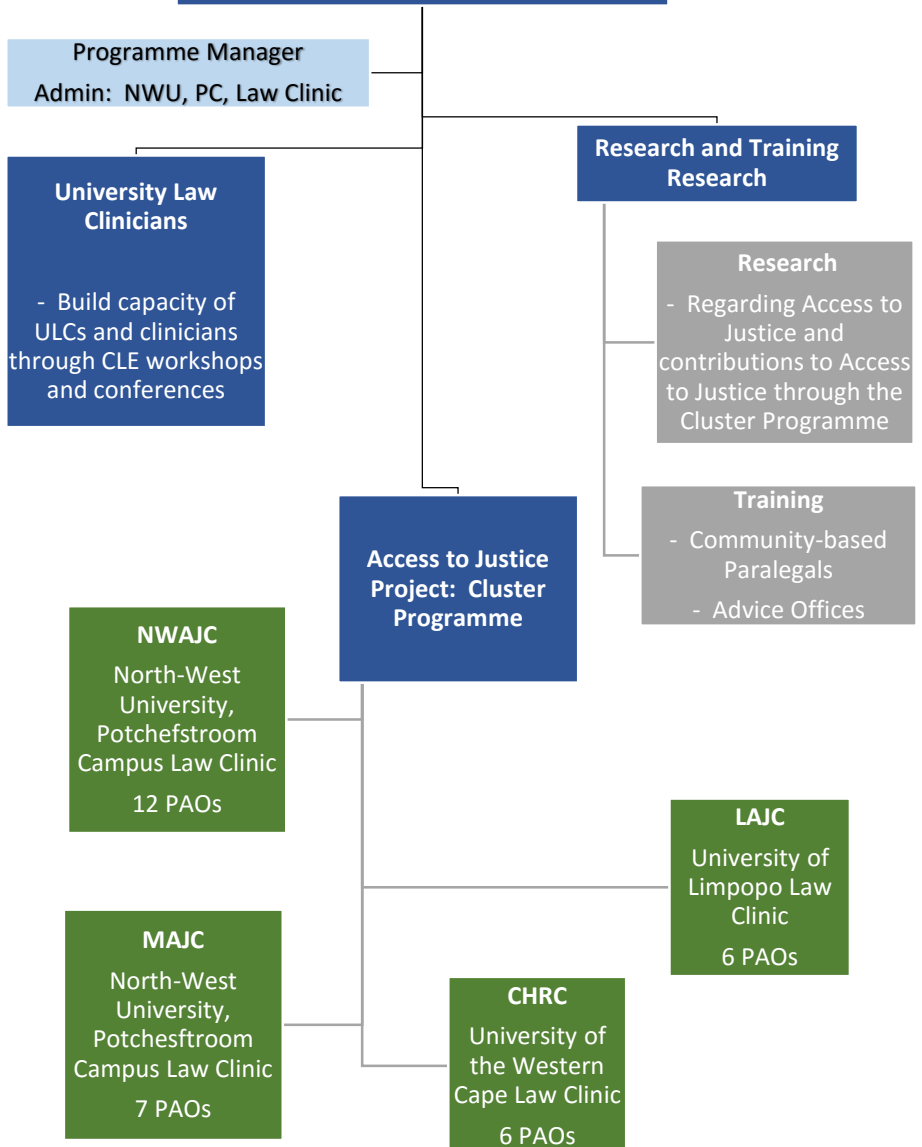
Shamiel Jassiem;

Edward Hanekom

All the business and affairs of the Trust are managed and controlled by the trustees and they are responsible to implement and oversee the objectives of the Trust.

THE STRUCTURE OF THE TRUST

The Board of Trustees



THE TRUST – WHAT DO WE DO?

CLINICAL LEGAL EDUCATION

The initial activity of the Trust was to establish CLE Programmes at ULCs at South African Universities which was done in the years 2000 to 2005. Within this programme the Trust funded ULCs to establish these programmes. Furthermore the Trust assisted the ULCs to implement the programme through on-site visits, whereby practical implementation of the programmes were facilitated and mentored. The result of the implementation of these programmes is that, currently, CLE is either a compulsory course or an elective course at all universities in South Africa. The Trust therefore assisted universities and contributed to the successful establishment and implementation of this programme.



WORKSHOPS AND CONFERENCES

The Trust, in co-operation with SAULCA, arranged, presented and funded a number of workshops and conferences to develop and enhance CLE and to assist and equip law clinicians in this regard. The workshops that took place were, inter alia, on the following subjects:

2004 - Curriculum Development of a CLE Programme;

2005 - Teaching Methodology of a CLE Programme;

2006 - Assessment of a CLE Programme;

2007 - Lesson plans for a CLE Programme;

2008 - The management and operation of a Law Clinic.

The outcome of these workshops was that comprehensive manuals were developed for use by ULCs and law clinicians.

AND more recently

- **AULAI Winter Conference – Port Elizabeth, July 2013**

The main objectives of the conference was to:

1. Create and promote awareness, passion and interest in the clinical movement as well as social justice;
2. Simulate critical thinking in order to evaluate and identify the challenges faced by clinicians;

3. Adopting approaches to combating these challenges and identify sound solutions to common problems;
4. Facilitating a critical approach by individual clinicians to CLE practices and methodologies;

- **SAULCA WINTER WORKSHOP – Muldersdrift, July 2014**

The following important points were raised and discussed during the workshop:

1. Latest development to the LLB curriculum and how CLE fits into these developments;
2. Implications of the Legal Practice Bill which will affect law clinics and law students;
3. Proposals on how to entrench the necessity of CLE in the LLB curriculum;
4. Lack of professional and basic skills in learners and how we as practitioners and teachers can structure our courses to equip students with the requisite skills and attributes required of a well-rounded attorney, alternatively legal professional;
5. The need for ethics to be written into standards and for students and graduates to acquire the ability to read law reports, journals and articles.

- **SAULCA WORKSHOP DURBAN, July 2015**

The 2015 SAULCA workshop was held in conjunction with the conference of the Society of Law Teachers of Southern Africa (SLTSA).

At the SLTSA conference papers were presented on Clinical Legal Education. Also of great importance, at this conference, law clinics and clinicians familiarized themselves with the aspects of the standard of teaching and learning relevant to clinics and they actively participate in the process to contribute to this aspect. The content of this standard relevant to clinics is:

1. Transformative constitutionalism and social justice;
2. Purpose (preparation for practice; the values and principles of the constitution; application of knowledge in professional contexts);
3. Knowledge (there is specific reference to CLE);
4. Skills (critical thinking and research skills have relevance to CLE)
5. Applied competence (CLE has a role in most of these, including: ethics and integrity; communication skills and literacy; numeracy; problem-solving; self-management; transfer of knowledge; agency; accountability and service to the community);
6. Assessment (CLE offers a wonderful array of innovative assessment methods: oral and written, individual and group, mostly formative but also summative).

ACCESS TO JUSTICE – THE CLUSTER PROGRAMME

The definition of an Access to Justice Cluster is:

Co-operative body of ULCs and paralegal advice offices, together with one or more of the following: justice centres, private practitioners and / or other organisations properly structured, with the aim of providing access to justice and legal aid services to poor and marginalised people in rural and remote areas, informal settlements and squatter camps, supported through funders or through the state legal aid system or other governmental bodies.

This programme is directed towards Paralegals, Community Based Paralegal Advice Offices (PAOs) and the community at large. The motivation for being involved in this programme derives from the tremendous need of the poor and marginalised people in our communities, frequently from rural and remote areas, to be able to access their rights. The AULAI Trust and its partners, University Law Clinics and PAOs, are involved in this initiative since 2003 and, over the years, reached literally thousands of people.

The undermentioned Access to Justice Clusters were established in 2003. These clusters are supported by the Trust and are still operational:

- Mpumalanga Access to Justice Cluster;
- North-West Access to Justice Cluster;

- Metropole of the Western Cape (Cape Human Rights Justice Cluster);
- Capricorn region of Limpopo (Limpopo Access to Justice Cluster).

The programme aims to provide legal back up services to CBPAOs, to assist paralegals on legal aspects, to render legal advice, to render legal services to indigent communities to be involved in education and training of paralegals and outreach programmes to educate communities on their rights as such.

The Clusters specialize in different spheres of the law. The activities and cases in this regard can be summarized under the categories:

Family matters – which include cases on divorce, domestic violence, maintenance, custody of children, general rights of woman and children;

Labour matters;

Criminal matters;

Housing and Land;

Wills and Estates;

Social Rights;

General Civil Litigation.

Other than that the ULCs conduct workshops on general and specific issues of interest to CBPAOs, Non-Governmental Organisations (NGOs), Community Based Organisations (CBOs) and the community at large reaching large numbers of people as such. This workshops are a routine activity within clusters and differs from cluster to cluster.

In all the activities summarized above, it is evident that the ULCs make a major contribution to the activities of CBPAOs and on communities at large with the emphasis on the poor and marginalized people in the country.



In this photo (from left to right): John Moerane (Coordinator: Lethabong Advice and Development Centre); Daniel Mokwena (Paralegal: Lethabong Advice and Development Centre); Schalk Meyer (Programme Manager: AULAI Trust); Seth Mnguni (Chairperson: Association of Community Advice Offices in South Africa).

- **Mpumalanga Access to Justice Cluster** - consisting of cooperation between 6 Community Based Advice Offices (situated across the Mpumalanga Province) and the Law Clinic of the North-West University, Potchefstroom Campus (satellite office situated in Nelspruit).



**MPUMALANGA ACCESS TO
JUSTICE CLUSTER**



NR	Name of organisation	Distance from Nelspruit - One way trip - (Km / Mi)
1	Mpumalanga Access to Justice Offices (Nelspruit)	
2	Ukuthula Community Advice Office	305 km / 190 mi
3	Kwa-Guqa Advice Office	223 km / 139 mi
4	Leandra Community Centre (Advice Office)	290 km / 180 mi
5	Bohlabela Resource & Advice Office	99 km / 62 mi
6	Nkomazi Community Advice Office	101 km / 63 mi
7	Masisukumeni Women's Crisis centre	105 km / 65 mi

Map of the Mpumalanga Province

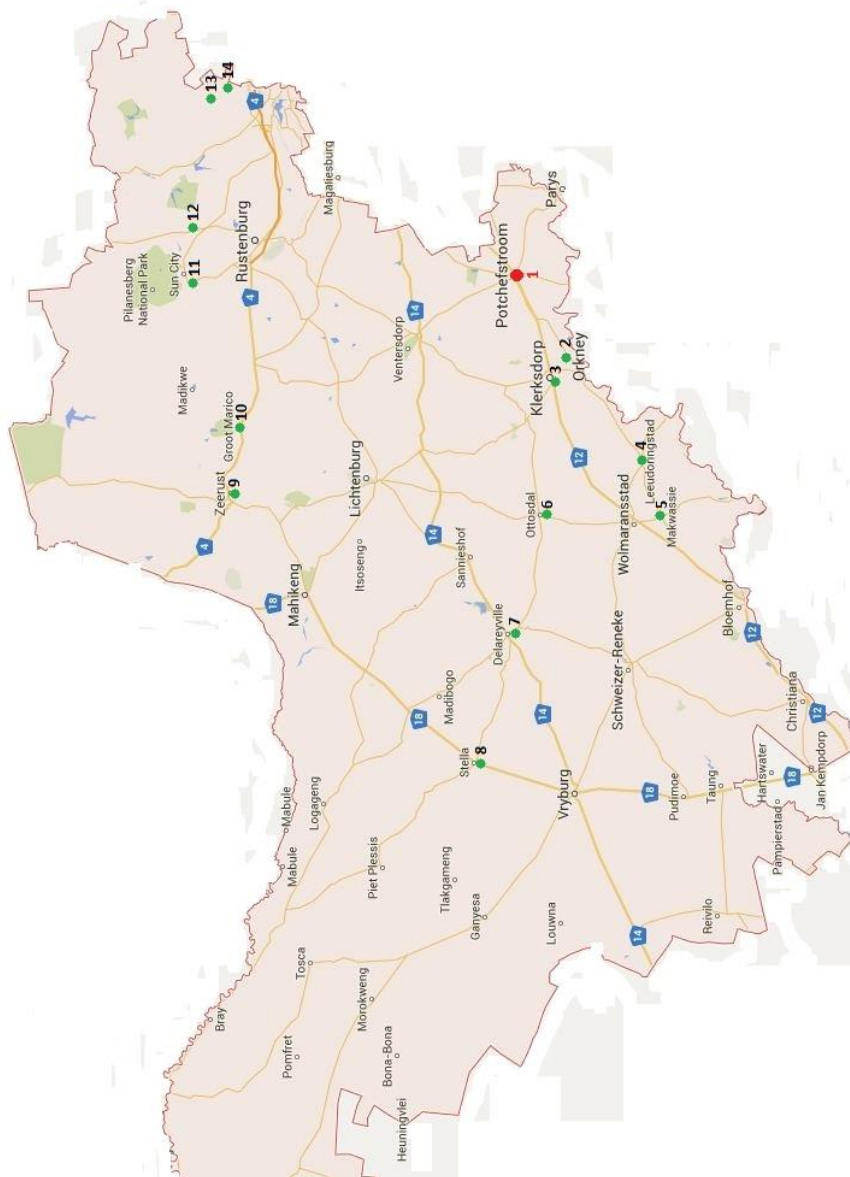


- **North-West Access to Justice Cluster** – consisting of cooperation between 13 Community Based Advice Offices (situated across the North West Province) and the Law Clinic of the North-West University, Potchefstroom Campus (offices situated in Potchefstroom).



NR	Name of organisation	Distance from Potchefstroom - One way trip - (Km / Mi)
1	North-West University Potchefstroom Campus, Law Clinic (Potchefstroom)	
2	Orkney Legal Advice and Development Centre	47 km / 29 mi
3	Jouberton Advice Office	55 km / 34 mi
4	Leeudoringstad	111 km / 68 mi
5	Lebaleng Advice and Development Centre	141 km / 88 mi
6	Letsopa Advice Office	121 km / 75 mi
7	Atamelang	205 km / 127 mi
8	Itireleng	245 km / 152 mi
9	Tlhaofalo	224 km / 139 mi
10	Groot Marico	189 km / 117 mi
11	Bojanala	185 km / 115 mi
12	Lethabong	227 km / 141 mi
13	Jericho	240 km / 149 mi
14	Letlhabile	223 km / 139 mi

Map of the North-West Province



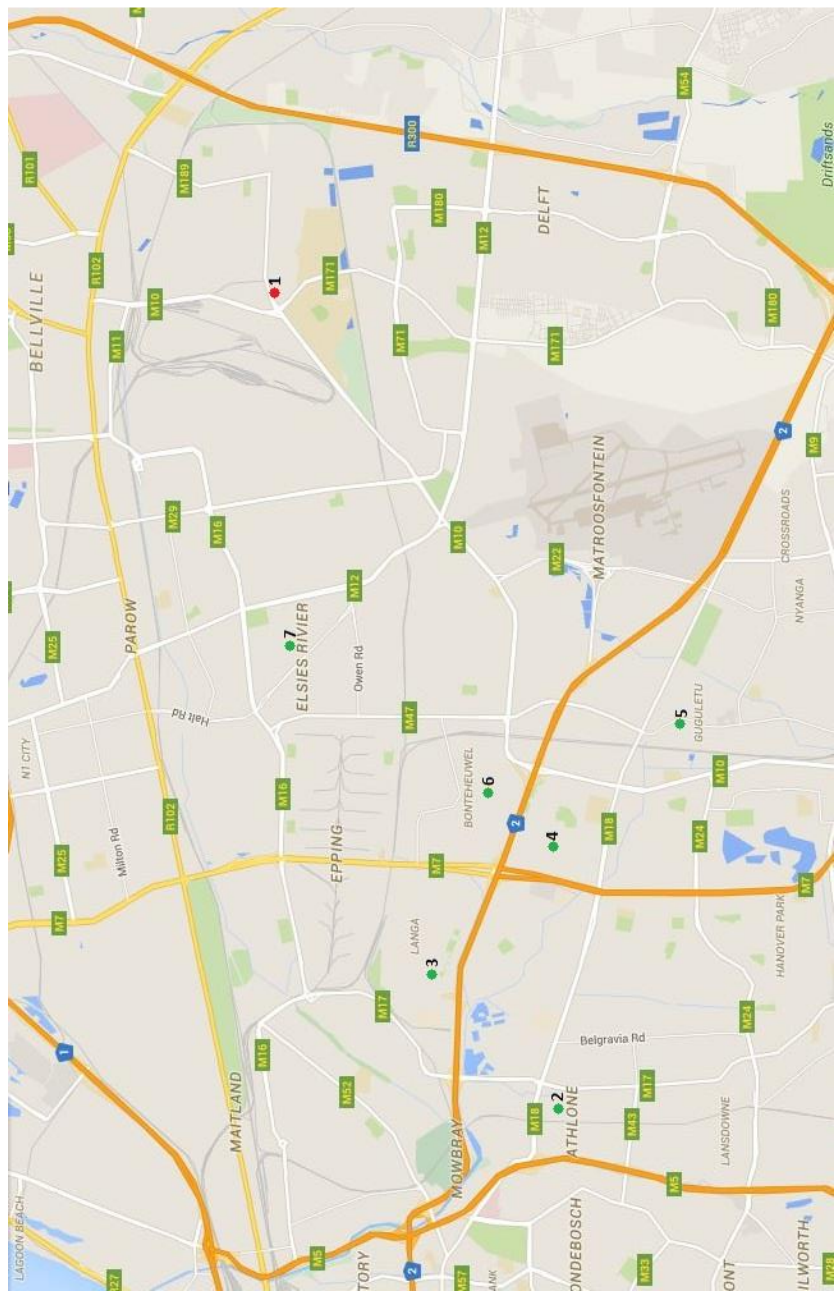
- **Cape Human Rights Cluster** – consisting of cooperation between 6 Community Based Advice Offices (situated in the Metropole of the Western Cape) and the Law Clinic of the University of the Western Cape (offices situated in Bellville, Cape Town).

CAPE HUMAN RIGHTS CLUSTER



NR	Name of organisation	Distance from Bellville - One way trip - (Km / Mi)
1	University of the Western Cape, Law Clinic	
2	Athlone	24 km / 15 mi
3	Langa	23 km / 14 mi
4	Heideveld	14 km / 9 mi
5	Gugulethu	15 km / 9 mi
6	Bonteheuwel	13 km / 8 mi
7	Elsies River	9 km / 6 mi

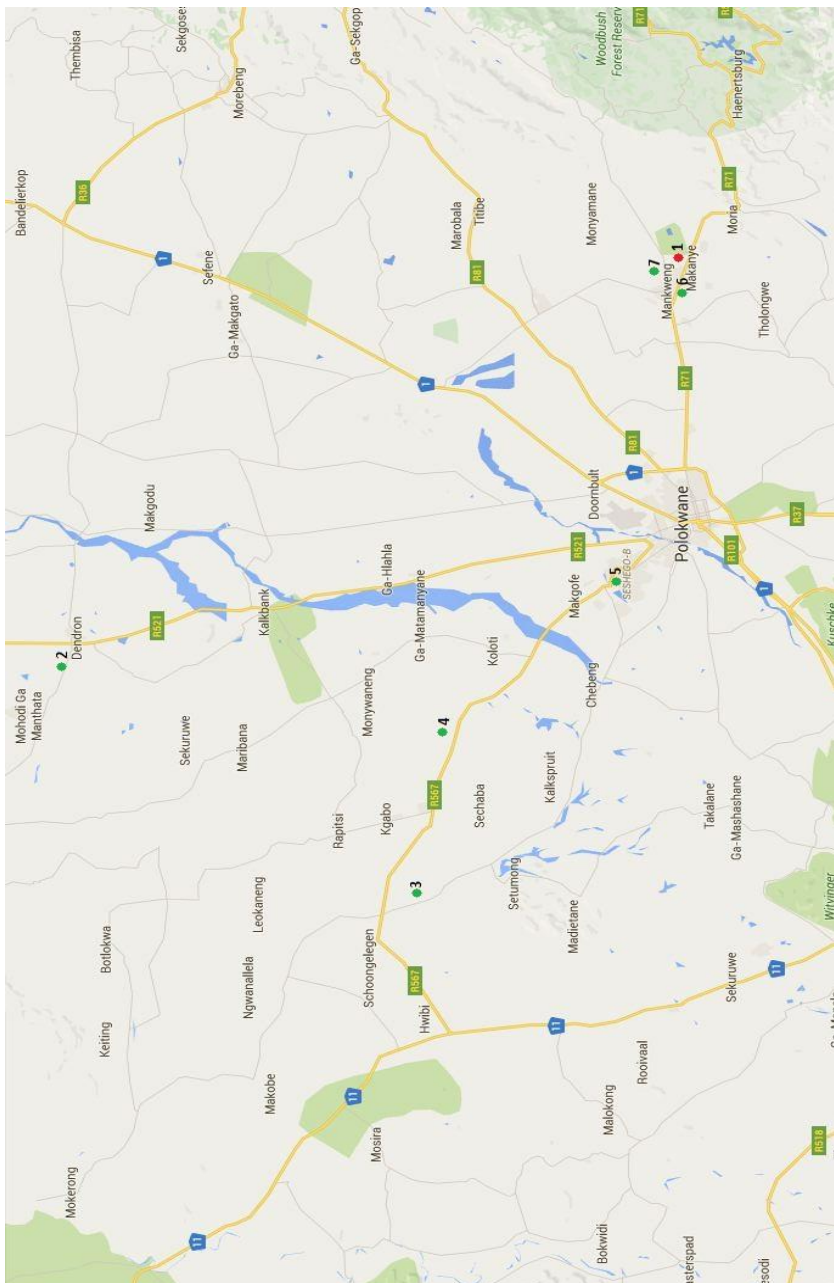
Map of the Metropole of the Western Cape Province



- **Limpopo Access to Justice Cluster** – consisting of cooperation between 6 Community Based Advice Offices (situated in the Capricorn region of the Limpopo Province) and the Law Clinic of the University of Limpopo (offices situated in Polokwane).

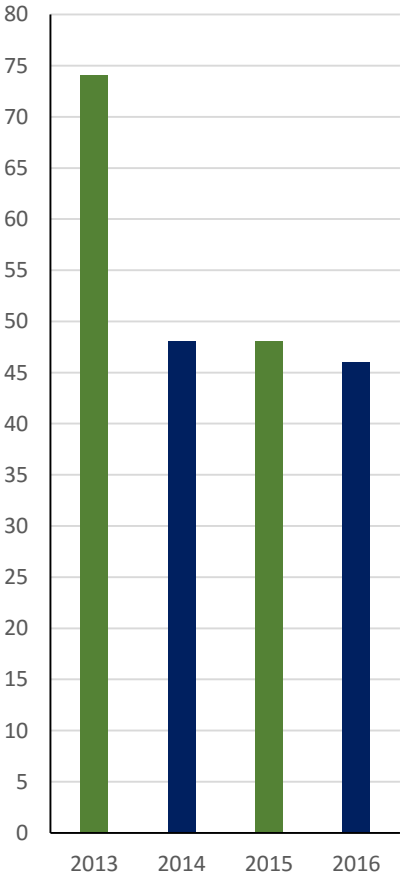
NR	Name of organisation	Distance from Mankweng - One way trip - (Km / Mi)
1	Manthata Advice Office	115 km / 71 mi
2	Matlala Advice Office	157 km / 98 i
3	Ditenteng Advice Office	85 km / 53 mi
4	Bloodriver Advice Office	57 km / 35 m
5	Mankweng Community Law Advice Office	10 km / 6 mi
6	Mankweng Advice Centre	5 km / 3 mi

Map of the Capricorn region of the Limpopo Province

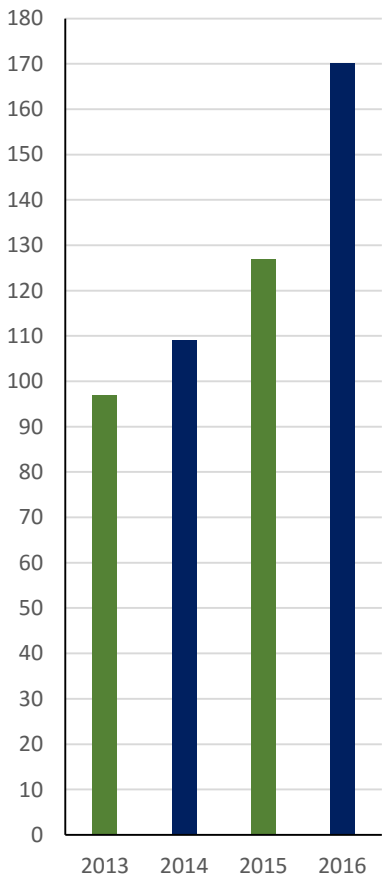


STATISTICS: AULAI TRUST

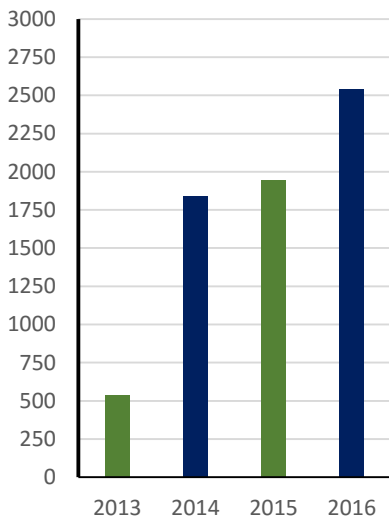
No. of advice offices assisted



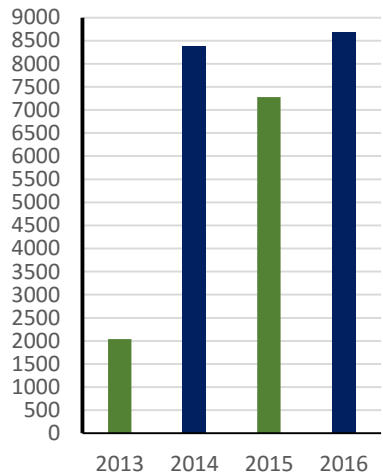
No. of visits to advice offices



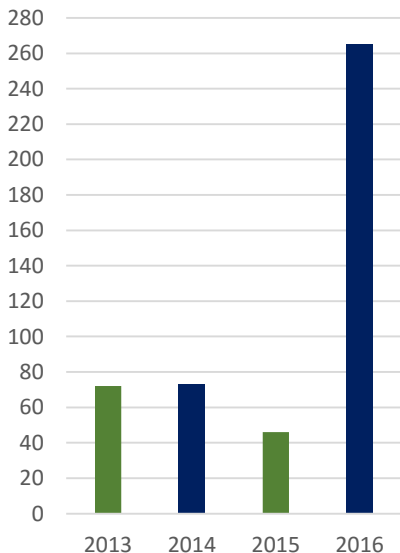
No. of files opened



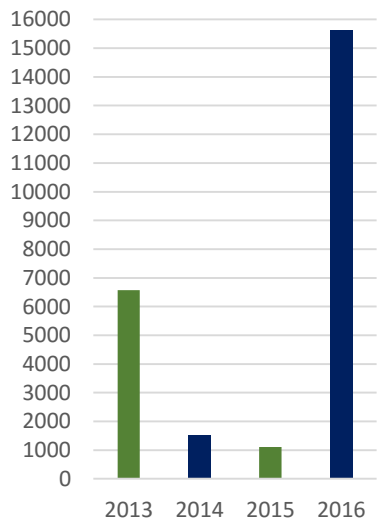
No. of clients assisted



No. of workshops held



No. of people reached through workshops



PARALEGAL TRAINING

- On-site training done by the University Law Clinics involved with the Cluster Programmes, during visits to the CBPAOs on aspects such as consultations, office and file administration, letter writing and basic legal aspects.
- Formal training provided by service providers, such as the North-West University, Potchefstroom Campus, Law Clinic that conducted their registered 4-day Short Learning Programme on Legal Aspects of Governance and Compliance in the following Provinces:

Province	Date	Number of attendees
North-West	31 Oct – 3 Nov 2016	12
Mpumalanga	14 – 17 Nov 2016	12
Limpopo	9 – 12 Jan 2017	12
Western Cape	23 – 26 Jan 2017	11



Photo taken during training presented in Limpopo from 9 – 12 January 2017.

FUNDERS

Our appreciation to the funders regarding our activities.



FORDFOUNDATION

*Working with Visionaries on the
Frontlines of Social Change Worldwide*



International
Commission
of Jurists

Svenska Avdelningen av Internationella Juristkommissionen
Swedish Section of the International Commission of Jurists

The
A T L A N T I C
Philanthropies



CHARLES STEWART
MOTT FOUNDATION



**OPEN SOCIETY FOUNDATION
FOR SOUTH AFRICA**

AULAI TRUST CONTACT DETAILS:

Schalk Meyer

Programme Manager of the AULAI Trust

Tel: 018 297 5341

Cell: 081 853 0384

E-mail: Lizelle.DuPisani@nwu.ac.za

Address: North-West University, Potchefstroom Campus, Law Clinic

C/o Thabo Mbeki Drive & Meyer Street

Potchefstroom, 2531