



**ANNUAL REPORT  
2017**

**ABOUT THE AULAI TRUST:**

The South African University Law Clinics Association (SAULCA) – previously known as the Association of University Legal Aid Institutions (AULAI) was established in 1986 and is the umbrella body for all University Law Clinics (ULCs) in South Africa. SAULCA was instrumental in the founding of the AULAI Trust (the Trust) and it was established in 1998 with funds received from the FORD FOUNDATION as an endowment fund. Since 1998 the Trust received funding from various donors through which the Trust established a number of successful projects. The projects, as described herein later are still operational.

Through its projects the Trust gathered a wealth of information on access to justice, the activities of law clinics (ULC's), clusters, Community Based Paralegal Advice Offices (CBPAOs) and paralegals. This information is, *inter alia*, on the following:

- Clinical Legal Education (CLE)
- Development of ULC's
- Access to Justice Clusters
- Candidate Attorneys
- Involvement with paralegal structures, CBPAOs and paralegals
- Free legal services to thousands of people

**THE AIM AND OBJECTIVES OF THE TRUST:**

The aim of the Trust is to create a fund for all legal aid and clinical legal education institutions at universities in the Republic of South Africa, the operations of which are in the interest of the citizens of the country.

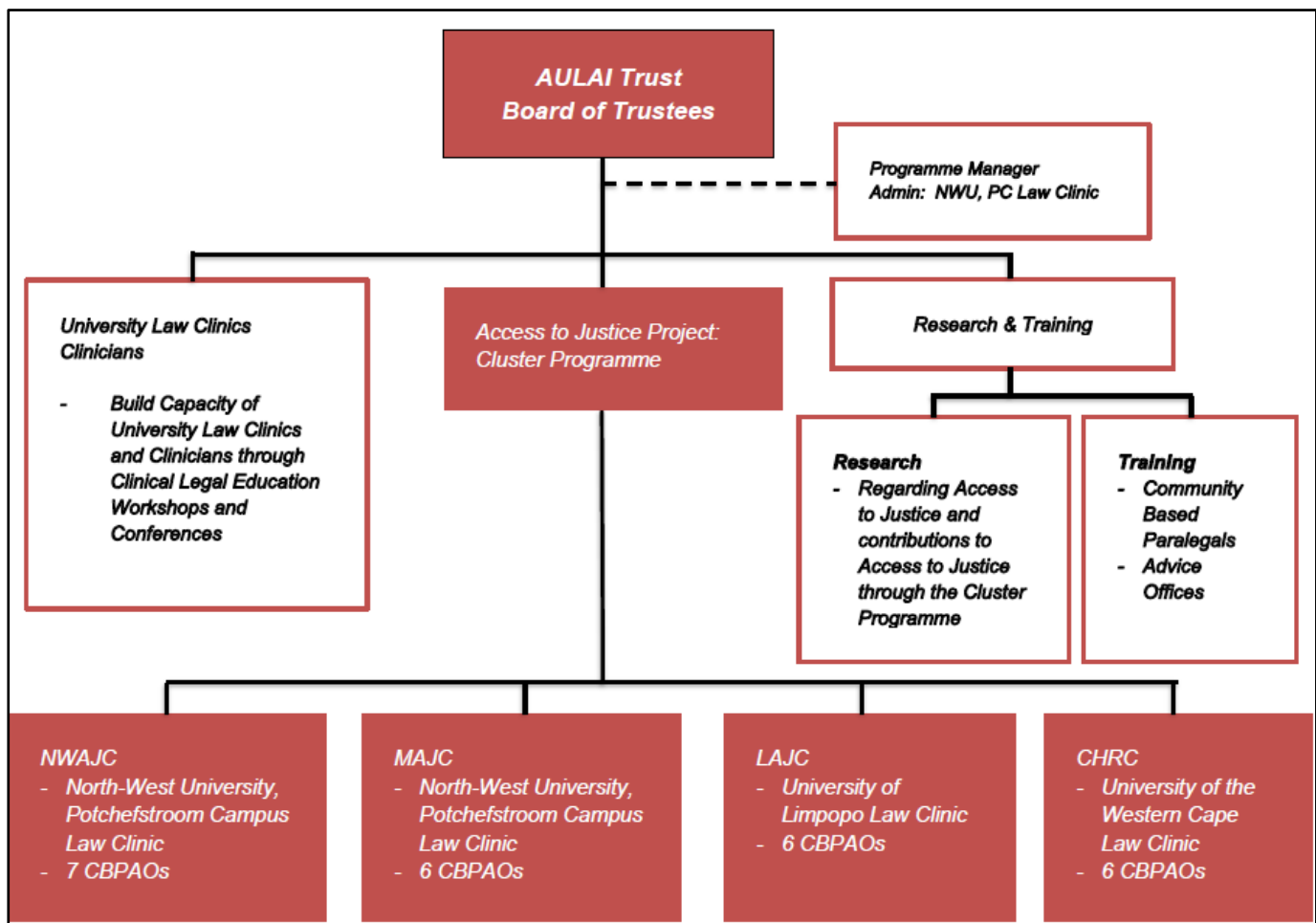
In furthering the aim of the Trust, the Trust has the following objectives:

1. The promotion of legal aid in South Africa, in particular through the co-ordination and promotion of the activities and interests of legal aid institutions attached to the universities of South Africa;
2. The encouragement and promotion of practical legal education of law students by members of the association;
3. To provide program support and capacity building to law clinics; and
4. The fostering, maintaining and extending of the public confidence in the law and the administration of justice.

Furthermore, the Trust focusses on the development of collaborative partnerships with other organisations that share the vision of the Trust, such as the Paralegal movement in South Africa.

**The activities of the Trust shall be confined to the Republic of South Africa and the funds of the Trust will be applied within the Republic of South Africa.**

## THE STRUCTURE OF THE AULAI TRUST:



## THE TRUSTEES:

YOUSUF VAWDA (the founder Trustee)

along with:

DAVID McQUOID MASON;  
KARTHIGASEN GOVENDER;  
NICHOLAAS STEYTLER;  
JONATHAN CAMPBELL;  
JOBST BODENSTEIN;  
THULISILE MHLUNGU;  
SHAMIEL JASSIEM;  
EDWARD HANEKOM

All the business and affairs of the Trust are managed and controlled by the trustees and they are authorized to carry out the objectives of the Trust.

## THE TRUST – What do we do?

### CLINICAL LEGAL EDUCATION (CLE)

The initial purpose of the Trust was to establish CLE Programmes at ULCs at South African Universities, which was done in the years 2000 to 2005, by providing funding to ULCs to do so. The result of the implementation of these programmes is that, currently, CLE is either a compulsory course or an elective course at all universities in South Africa.

### WORKSHOPS AND CONFERENCES

The Trust, in co-operation with SAULCA, arrange, present and fund workshops and conferences to develop and enhance CLE and to assist and equip law clinicians with the necessary skills to teach CLE. During 2017 a workshop on Decolonisation of CLE were hosted.

## ACCESS TO JUSTICE – THE CLUSTER PROGRAMME

### The definition of an Access to Justice Cluster is:

Co-operative body of ULCs and paralegal advice offices, together with one or more of the following: justice centres, private practitioners and / or other organisations properly structured, with the aim of providing access to justice and legal aid services to poor and marginalised people in rural and remote areas, informal settlements and squatter camps, supported through funders or through the state legal aid system or other governmental bodies.

### The AULAI Trust supports four (4) Access to Justice Clusters in four provinces (established in 2003), namely the:

- **Mpumalanga Access to Justice Cluster** - consisting of cooperation between 6 Community Based Advice Offices (situated across the Mpumalanga Province) and the Law Clinic of the North-West University, Potchefstroom Campus (satellite office situated in Nelspruit).

NR	Name of organisation	Distance from Nelspruit (Km / Mi)
1	Ukuthula Community Advice Office	305 km / 190 mi
2	Kwa-Guqa Advice Office	223 km / 139 mi
3	Leandra Community Centre (Advice Office)	290 km / 180 mi
4	Bohlabela Resource & Advice Office	99 km / 62 mi
5	Nkomazi Community Advice Office	101 km / 63 mi
6	Masisukumeni Women's Crisis centre	105 km / 65 mi

- **Cape Human Rights Cluster** – consisting of cooperation between 6 Community Based Advice Offices (situated in the Metropole of the Western Cape) and the Law Clinic of the University of the Western Cape (offices situated in Bellville, Cape Town).

NR	Name of organisation	Distance from Bellville (Km / Mi)
1	Athlone Advice Office	24 km / 15 mi
2	Langa Advice Office	23 km / 14 mi
3	Heideveld Advice Office	14 km / 9 mi
4	Gugulethu Advice Office	15 km / 9 mi
5	Bonteheuwel Advice Office	13 km / 8 mi
6	Elsies River Advice Office	9 km / 6 mi

- **North-West Access to Justice Cluster** – consisting of cooperation between 11 Community Based Advice Offices (situated across the North West Province) and the Law Clinic of the North-West University, Potchefstroom Campus (offices situated in Potchefstroom).

NR	Name of organisation	Distance from Potchefstroom (Km / Mi)
1	Orkney Legal Advice and Development Centre	47 km / 29 mi
2	Jouberton Advice Office	55 km / 34 mi
3	Leeudoringstad Advice Office	111 km / 68 mi
4	Lebaleng Advice and Development Centre	141 km / 88 mi
5	Tlhaofalo Advice Office	224 km / 139 mi
6	Tlhokomelo Advice Office (Groot Marico)	189 km / 117 mi
7	Bojanala Advice Office	185 km / 115 mi
8	Lethabong Advice Office	227 km / 141 mi
9	Lethabong Drop-in Centre (Jericho)	240 km / 149 mi
10	Letlhabile Advice Office	223 km / 139 mi
11	Ventersdorp Human Rights Legal Network (mini-cluster consisting of 4 NPOs)	65 km / 40 mi

- **Limpopo Access to Justice Cluster** – consisting of cooperation between 6 Community Based Advice Offices (situated in the Capricorn region of the Limpopo Province) and the Law Clinic of the University of Limpopo (offices situated in Polokwane).

NR	Name of organisation	Distance from Mankweng - One way trip - (Km / Mi)
1	Manthata Advice Office	115 km / 71 mi
2	Matlala Advice Office	157 km / 98 mi
3	Ditenteng Advice Office	85 km / 53 mi
4	Bloodriver Advice Office	57 km / 35 m
5	Mankweng Community Law Advice Office	10 km / 6 mi
6	Mankweng Advice Centre	5 km / 3 mi

*The ULCs involved in clusters render legal and back up legal services to the CBPAOs within that cluster. The ULCs visit the CBPAOs on a monthly or bi-monthly basis to assist paralegals with legal aspects that they encounter, to offer legal advice to community members, to attend to referrals from CBPAOs, to be*

involved in litigation where necessary, to present workshops on a number of topics to the community, as well as to provide skills training for paralegals.

The ULCs specialize in different spheres of the law. The activities and cases in this regard can be summarized under the following categories:

- Family matters (divorce, maintenance, domestic violence and parental rights and responsibilities);
- Labour matters;
- Housing and Land;
- Provident and pension fund issues;
- Social justice; and
- General Civil Litigation.

#### PARALEGAL TRAINING

- Informal training – on-site training such as the 1-day training on Governance
- NWU registered short learning programmes and short courses, such as:
  - Introductory Paralegal Training
  - Advanced Paralegal Training
  - SLP on Mediation Skills
  - SLP on Basic Legal Training
  - Legal Aspects of Governance and Compliance
  - Various other SLPs / SCs such as the Law of Contract, Children’s Act, ADR and the Administration of Estate

### STATISTICS: 1 JANUARY – 31 DECEMBER 2017

#### ON-SITE TRAINING

The Clusters continue with “on-site” training to paralegals at CBPAOs during the visits to these offices. The training is done by the Attorneys and Candidate Attorneys employed by the Clusters. The training includes basic legal aspect of the law as well as best practices for file management, case management, consultation and governance of the CBPAO.

#### BACK-UP LEGAL SERVICES

The number of on-site visits to CBPAOs:

Cluster	No
Mpumalanga Access to Justice Cluster	57
North West Access to Justice Cluster	63
Cape Human Rights Cluster	28
Limpopo Access to Justice Cluster	36
<b>TOTAL:</b>	<b>184</b>

The number of people assisted were as follows:

Cluster	No
Mpumalanga Access to Justice Cluster	1 188
North West Access to Justice Cluster	2 893
Cape Human Rights Cluster	2 784
Limpopo Access to Justice Cluster	2 843
<b>TOTAL:</b>	<b>9 708</b>

#### CAPACITY BUILDING

The paralegals also attended the 1-day NWU registered short course on Legal Aspects of Governance and Compliance (Short-Course code: J19 100 1) during which a total of **32** workshops were presented in the Provinces of: North-West, Mpumalanga, Northern Cape, Limpopo and the Western Cape. This training was attended by **455** paralegals, their management committee members and other stakeholders.

#### COMMUNITY WORKSHOPS

During 2017 the Clusters conducted various community workshops on themes identified according to the need of the community, including: gender based violence, consumer awareness, children’s rights, human rights, domestic violence, social grants and the recognition of customary marriages, UIF, labour matters, land matters, etc.

Cluster	Workshops	Attendees
Mpumalanga Access to Justice Cluster	35	2514
North West Access to Justice Cluster	54	2421
Cape Human Rights Cluster	48	1547
Limpopo Access to Justice Cluster	40	2069
<b>TOTAL</b>	<b>171</b>	<b>8551</b>